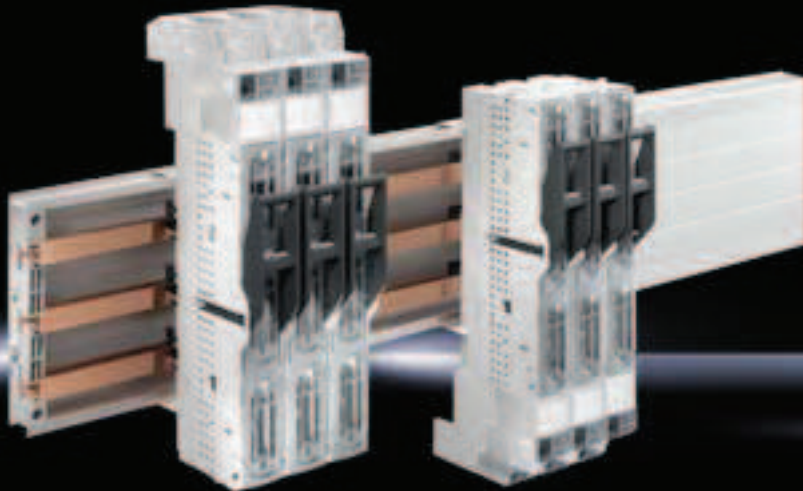


RiLine NH fuse elements



Busbar systems Page 276 – 279, 340 **Connection system** Page 280 – 282 **NH fuse-switch disconnectors** Page 296 – 305

Material:

- Fibreglass-reinforced polyamide
- Fire protection corresponding to UL 94-V0
- Contact tracks: Silver-plated hard copper

Basis of test:

- IEC/DIN EN 60 947-3
- DIN EN 60 269-2 (fuse inserts)

Technical information:

Available on the Internet.

Detailed drawings:

Available on the Internet.

Colour:

- Chassis: RAL 7035
- Cover: RAL 7001
- Handle: RAL 7016

NH slimline fuse-switch disconnectors, size 00 (3-pole)

Rated operating current	Packs of	160 A		160 A		160 A		Page
Rated operating voltage		690 V~		690 V~		690 V~		
Cable outlet		top/bottom		top/bottom		top/bottom		
Type of connection		Box terminal		Screw M8		Screw M8		
Connection of round conductors mm ²		2.5 – 95		up to 95		up to 95		
Width mm		50		50		50		
Height mm		400		400		740		
For converter installation		–	–	–	–	–	■	
For bar systems with centre-to-centre spacing mm		60	100	60	100	185	185	
For bar thickness mm		5/10	10	5/10	10	10	10	
Model No. SV	1	9346.000	9346.020	9346.010	9346.030	9346.040	9346.050	

Also required

Busbar adaptor

For mounting SV 9346.020/.030 on bar systems with 185 mm centre-to-centre spacing

Design		1	–	9346.410	–	9346.410	–	–	325
Single adaptor		1	–	9346.410	–	9346.410	–	–	325
Two-way adaptor		1	–	9346.420	–	9346.420	–	–	325

Busbar terminal

For mounting SV 9346.040/.050 on bar systems with 185 mm centre-to-centre spacing

		3	–	–	–	–	9346.470	9346.470	–
--	--	---	---	---	---	---	-----------------	-----------------	---

Accessories

Micro-switch		5	9346.400	9346.400	9346.400	9346.400	9346.400	9346.400	324
Lug terminal connection part		1 set	–	–	3592.020	3592.020	3592.020	3592.020	324
Clamp-type terminal connection		1 set	–	–	3592.010	3592.010	3592.010	3592.010	325
Support bracket		4	9346.430	9346.430	9346.430	9346.430	9346.430	9346.430	325
Connection space cover		1	9346.460	9346.460	9346.460	9346.460	9346.460	9346.460	324
Sliding nuts M8 for mounting SV 9346.040/.050 on busbar systems	Maxi-PLS 1600/2000	15	–	–	–	–	9640.910	9640.910	329
	Maxi-PLS 3200	15	–	–	–	–	9650.905	9650.905	329