

Cable management



Cable clamping bracket

For installation in command panels with mounting cut-out □ 120 x 65 mm and Ø 130 mm.

Cable clamping optionally via:

- Cable clamps
- or
- Cable ties SZ 2597.000
- Standard commercially available cable ties

Bracket height = 25 mm with fitted C rail 40 mm

Material:

- Sheet steel

Surface finish:

- Zinc-plated

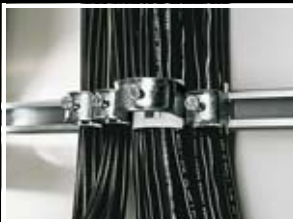
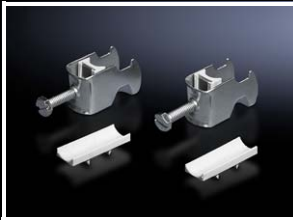
Supply includes:

- C rail and assembly screws

Packs of	Model No.
1 set(s)	6052.000

+ Accessories:

- Cable clamps, see page 666
- Cable ties, see page 667



Cable clamps

for C rails

For attaching the cables to the C rails.

Material:

- Sheet steel

Surface finish:

- Zinc-plated

Supply includes:

- Plastic insert

For cable diameter mm	Packs of	Model No.
6 – 14	25 pc(s).	7077.000
12 – 18	25 pc(s).	7078.000
18 – 22	25 pc(s).	7097.000
22 – 26	25 pc(s).	7097.220
26 – 30	25 pc(s).	7097.260
30 – 34	25 pc(s).	7097.300
34 – 38	25 pc(s).	7097.340
38 – 42	25 pc(s).	7098.000
42 – 56	25 pc(s).	7098.100
56 – 64	25 pc(s).	7099.000

+ Accessories:

- C rails, see from page 612



Cable conduit and cable conduit holder

For secure cable routing e.g. from the enclosure or mounting plate to the door. Attachment facility for standard commercially available cable ties is provided on the cable conduit holder, so that cables may be attached upon entry to/exit from the cable conduit.

Material:

- Cable conduit: Polythene
- Cable conduit holder: Polyamide

Cable conduit

Internal Ø mm	Packs of	Model No.
16	25 m	2595.000
29	25 m	2589.000
36	25 m	2596.000
48	25 m	2590.000

Cable conduit holder

For cable conduit Ø mm	Packs of	Model No.
16	20 pc(s).	2593.000¹⁾
29	20 pc(s).	2591.000¹⁾
36	20 pc(s).	2594.000
48	20 pc(s).	2592.000

¹⁾ Installation in compact enclosures AE with universal bracket 2373.000, see page 623