

Cable management

482.6 mm (19") cable management

Cable management panel with cable routing bars

482.6 mm (19")

For horizontal management of the patch cables with cable routing bars. Opening the individual cable routing bars allows user-friendly modification and extension of the cabling.

Material:

- Panel: Sheet steel, spray-finished
- Cable routing bars: Plastic

U	Bar depth mm	No. of bars/U	Colour		Packs of	Model No.
			RAL 7035	RAL 9005		
1	approx. 80	5	■	-	1 pc(s).	7257.050
1	approx. 80	5	-	■	1 pc(s).	5502.225



Cable management panel, 2 U

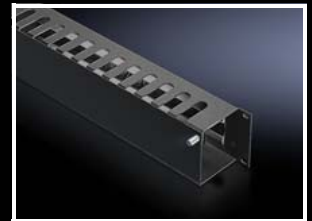
482.6 mm (19")

The cable routing chamber has cut-outs from above, into which the patch cables can be inserted. The cable management panel is equipped with a flap and quick-release fasteners at the front, for optimum access to the cables. From the rear, the cables can be inserted via a cut-out with brush strips.

Material:

- Sheet steel

U	Bar depth mm	Colour		Packs of	Model No.
		RAL 7035	RAL 9005		
2	85	■	-	1 pc(s).	7158.035
2	85	-	■	1 pc(s).	5502.235



Cable routing channel

482.6 mm (19")

To hold the patching cables.

Material:

- Sheet steel

U	Depth mm	Colour		Packs of	Model No.
		RAL 7035	RAL 9005		
1	85	■	-	1 pc(s).	7149.135
1	85	-	■	1 pc(s).	5502.245

