

Cable management

Cable entry

Cable entry grommets

In conjunction with the cable entry plate, simple and fast sealing of cables inserted in the base area of enclosures.

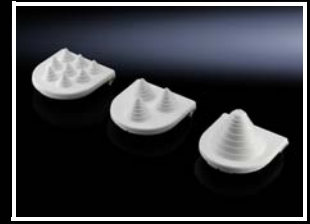
Material:

- Body: Polypropylene
- Cover: Thermoplastic elastomer

Protection category IP to IEC 60 529:

- IP 55 if installed correctly

Cables per grommet	Max. Ø mm	Packs of	Model No.
8	13	25 pc(s).	4316.000
3	21	25 pc(s).	4317.000
1	47	25 pc(s).	4318.000



Connector grommets

Suitable for cable diameters from 8 to 36 mm.

Material:

- Outer cover: Polypropylene covered with thermoplastic elastomer
- Seal: Cellular rubber

Protection category IP to IEC 60 529:

- IP 55 if installed correctly

Packs of	Model No.
10 pc(s).	4311.000



Section for cable entry, centre for TS, SE, CM, TP

For top-mounting on gland plates. A superior alternative to the foam rubber cable clamp strip, thanks to:

- Easier mounting
- Full-surface support
- High level of sealing of cables inserted into the enclosure

Material:

- Extruded aluminium section
- Seal: PU foam
- Cross-section: 30 x 25 mm

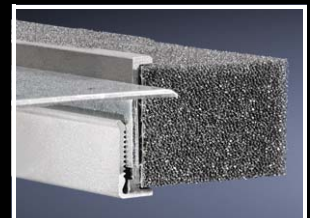
Protection category IP to IEC 60 529:

- IP 55 if installed correctly

Note:

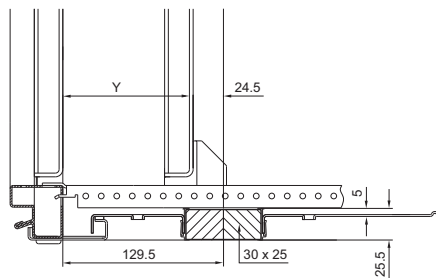
- 1 set is sufficient for one base opening up to an enclosure width of 800 mm. From an enclosure width of 1000 mm, two base openings are provided.
- 2 sets per enclosure may be fitted

For enclosure width mm	Packs of	Model No.
600	1 set(s)	8802.060
800	1 set(s)	8802.080
1000	2 set(s)	8802.100
1200	2 set(s)	8802.120
1600	2 set(s)	8802.160



Accessories:

- Cable clamp rail (right angle section), see page 665
- C rail 30/15, see page 612



Y = Mounting plate depth-adjustable on a 25 mm pitch pattern (final pitch 30 mm)