

Doors/locks

Installation accessories for modular front design TS



Trim panel, hinged at the top

for TS

For the installation of control and display components, in conjunction with

- Modular front design
- Protective bar TS

Material:

- Sheet steel, 2 mm

Surface finish:

- Textured paint

Colour:

- RAL 7035

Supply includes:

- Hinges, cam locks with double-bit insert and assembly parts

Width mm	Height mm	Packs of	Model No.
600	300	1 pc(s).	8801.230
800	300	1 pc(s).	8801.240
1200	300	1 pc(s).	8801.250

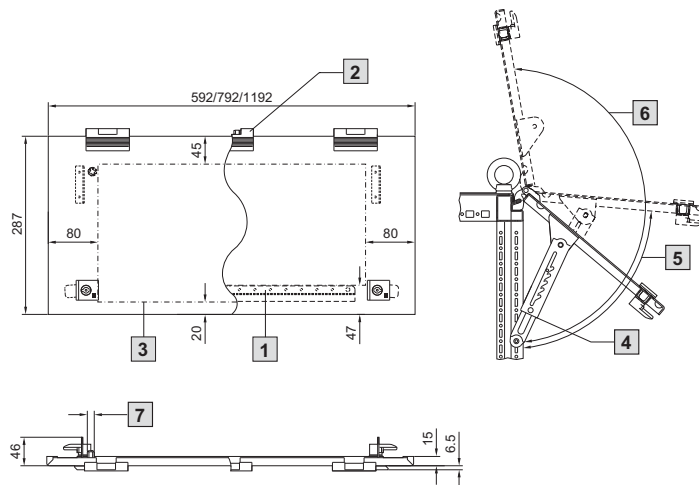
Note:

- Not in combination with top-mounted module for TS (see page 582)



Accessories:

- Stay for trim panel, hinged at the top see page 554
- Lock inserts, version A, see page 570



1 Only for width 800 mm and 1200 mm

2 Only for width 1200 mm

3 Usable interior area

4 Optional: Stay 8801.260

5 Maximum opening angle with stay approx. 85°

6 Maximum opening angle without stay approx. 190°

7 Earthing bolt M8



Drawer

for TS

For mouse and keyboard with a maximum width of 500/700 mm.

A high level of protection is retained, even with the flap open.

Standard double-bit lock insert may be exchanged for 27 mm lock inserts, type A, plastic handles, type B and T handles, type B.

Material:

- Sheet steel

Colour:

- RAL 7035

Height mm	Width mm	Model No.
200	600	8801.715
200	800	8801.915

Supply includes:

- Flap and assembly parts
- Cross member



Accessories:

- 27 mm lock inserts, type A, see page 570
- Plastic handle, type B, see page 569
- T handles, type B, see page 569



Stay

for trim panel, hinged at the top

5 pitch pattern positions up to a maximum opening angle of approx. 85°.

Material:

- Sheet steel

Surface finish:

- Zinc-plated

Packs of	Model No.
2 pc(s).	8801.260